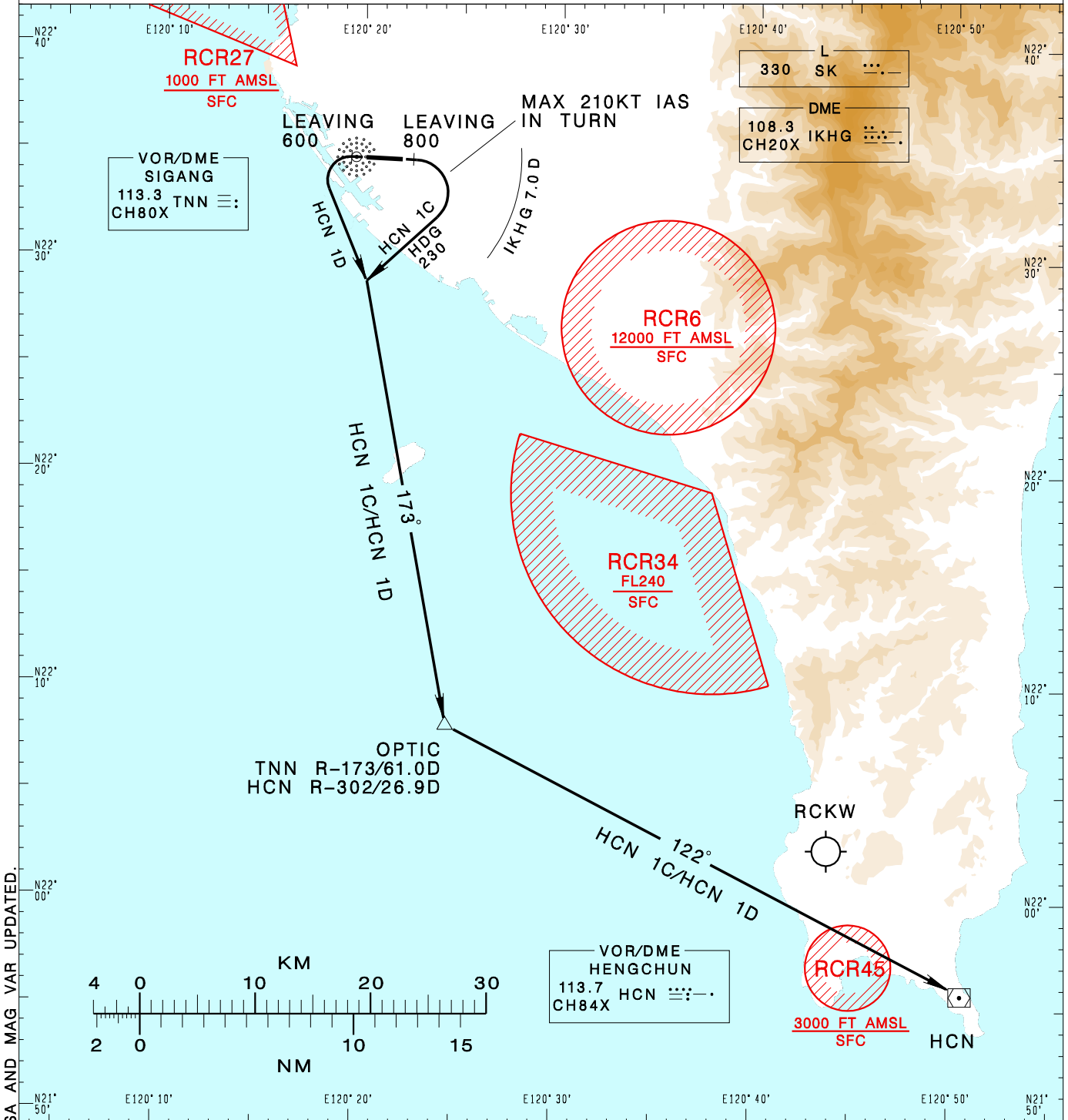


高雄國際機場
KAOHSIUNG INTL AD

RCKH SID
HCN 1C(RWY09)
HCN 1D(RWY27)

KAOHSIUNG APP 124.7 125.7	KAOHSIUNG TWR 118.7 120.7	ATIS 127.8	VAR 4°W-2023 ↑	12100' MSA ARP 25NM	
Apt Elev: 32'		Trans Level: FL130			Trans Alt: 11,000'
BEARINGS ARE MAGNETIC; DISTANCES ARE NAUTICAL MILES; ELEVATIONS, HEIGHTS IN FEET					



CHANGES: LEG CRS, MSA AND MAG VAR UPDATED.

HENGCHUN ONE CHARLIE DEPARTURE
Climb on RWY HDG until leaving 800ft, turn right HDG 230, complete the turn within 7.0D from IKHG, to track TNN R-173 to OPTIC, then track HCN R-302 to HCN.

HENGCHUN ONE DELTA DEPARTURE
Climb on RWY HDG until leaving 600ft, turn left to track TNN R-173 to OPTIC, then track HCN R-302 to HCN.

- NOTE**
1. Minimum climb gradient required:
HCN 1C: 6%(365ft/NM) until 2,000ft.
HCN 1D: 4.3%(265ft/NM) until 2,000ft.
 2. Caution: pier cranes, terrain and stacks east, west and south of the airport.
 3. ATS surveillance required.